

AS SEEN IN...
DESIGN
new england

ARCHITECTURE + INTERIORS

THE SOUTH FACADE of the house features a balanced composition of gables, porches, and elliptical wings. The pool house, to the left of the main building, features a lighthouse-like tower and provides additional guest quarters.

At the Water's Edge

A SUMMER HOUSE ON CAPE COD'S SOUTHERN SHORE

RECALLS THE GRAND ESTATES OF A BYGONE ERA

WRITTEN BY JILL CONNORS PHOTOGRAPHY BY SAM GRAY
ARCHITECTURE BY CATALANO ARCHITECTS INC. INTERIOR DESIGN BY BIERLY-DRAKE ASSOCIATES



Echoes

of an earlier, more formal era may reverberate through the house and grounds of a 3-acre estate in Osterville, Massachusetts, but the reality of this summer home is invitingly casual: a big house with a sweeping lawn that stretches to a dazzling 180-degree ocean view where the homeowners, a Boston businessman and his wife, can welcome their two college-age daughters (and their friends) for some downtime.

Drawing on such vernacular elements as cedar shingle siding, stone chimneys, and a variety of roof profiles — including gambrel, shed, and gable — architect Thomas P. Catalano, of Catalano Architects Inc. of Boston, created a new *hommage* to the classic Shingle style, giving it a relaxed informality while maintaining its elegance and its signature awareness of the ocean.

Indeed, preserving that view, not just from the main living space, but even from the winding driveway that welcomes visitors to the property, was key to Catalano's design. "The house faces due south," says the architect, "and a symmetrical composition suited the big lawn." Considering the prevailing southwest wind, he designed elliptical wings that extend from the main facade at both the east and west ends, highlighting the architectural symmetry but also playing a functional role. Enfolded in their protective embrace are a field-stone terrace and two porches. "The wings enable the family to be protected from the wind, sun, or rain, while still enjoying the outdoor spaces."

WITH A STUNNING VISTA TO THE SEA, the entry (RIGHT AND FACING PAGE) displays a balance of grand architectural elements, such as the double-height Palladian window, with relaxed furnishings such as the wicker chairs. The dining room (ABOVE) epitomizes the house's casual elegance; the kitchen can be seen just beyond, through a pocket door, and the foyer is reflected in the porthole mirror.



DESIGN DECISIONS *Checkered Past*

Both visual interest and amusement were factors in the choice of the diamond-patterned floor for the entry hall of this Osterville, Massachusetts, home. Whereas grand old summer mansions often had floors of either marble (too ostentatious) or quartersawn oak (too dark), this foyer utilizes quartersawn oak painted black and white. "It's a bit of a tongue-in-cheek play off marble floors, but it also makes the foyer more intimate," says interior designer Christopher Drake.



THE WALLS IN THE sitting room (FACING PAGE) are painted bright white, and the seating area, furnished with rattan finished with colorful cushions, clusters around a put-your-feet-up lacquered-linen coffee table. The kitchen (ABOVE) features such classic elements as painted paneled cabinetry and a coffered ceiling. A quilted stainless-steel backsplash behind the cooktop adds texture and the bright yellow chairs at the oversize island bring a spirit of conviviality.

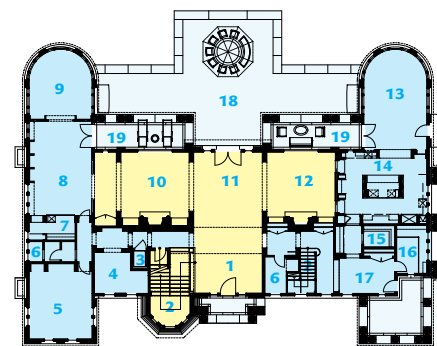


A double-height entry hall at the center of the house is a dramatic axis from which the first-floor rooms unfold, with dining room, kitchen, and family room to the west; living room, library, and home office to the east. The layout is designed to provide some relief from the sun as it moves across the house. Guest bedrooms and a master suite occupy the second floor, with south-facing balconies capturing the water views. The third floor contains bedrooms and lounging areas for the grown children; the basement is handsomely outfitted with an exercise room, billiards/bar area, and even a bowling alley, making the home a recreational retreat, no matter what the weather.

In the foyer, the black-and-white diamond-patterned floor lends graphic interest to the voluminous space, and French

doors topped by a Palladian window focus attention on the sea. "It's a grand reception area, the way old summerhouses used to be," says Lee Bierly, who, with partner Christopher Drake, of Boston's Bierly-Drake Associates, brought casual elegance to the design scheme. "The fabrics are simple and serviceable, with lots of linens, cottons, and chenilles that feel good on bare skin but are also durable," says Drake. A neutral background plays to the natural luminosity of the sun reflecting off the water. "We chose a crisp bright white for painted surfaces — an off-white starts to look gloomy in this seaside light," says Drake. "Next, we chose a beige that references the sandy beach." Lively accents in yellows, blues, and corals are strategically placed throughout the house.

- 1 ENTRY
- 2 STAIRWAY
- 3 ELEVATOR
- 4 READING ROOM
- 5 MEDIA ROOM
- 6 POWDER ROOM
- 7 BAR
- 8 LIBRARY
- 9 OFFICE
- 10 LIVING ROOM
- 11 GREAT ROOM
- 12 DINING ROOM
- 13 BREAKFAST/SITTING ROOM
- 14 KITCHEN
- 15 PANTRY
- 16 LAUNDRY ROOM
- 17 MUD ROOM
- 18 REAR TERRACE
- 19 PORCHES



■ FAMILY SPACES ■ TERRACES ■ RECEPTION AREAS

In the kitchen, a 10-foot-high coffered ceiling frames classic white cabinetry, reclaimed antique mahogany floors, and stainless-steel appliances. The large marble-topped island was a special request of the homeowners, who wanted it to be a place where everyone could hang out; bright yellow chairs make it a vivid gathering spot.

The essence of summer, however, is most evident in the pool house, where prime spots for basking in sunny delights include the pool's stone terrace and porch. And with one last nod to the ocean setting, the winding stairway that leads to the pool house's second-floor guest bedrooms occupies a tower that, when viewed from the water, looks just like a lighthouse. ▲

FOR MORE DETAILS, SEE RESOURCES